

# MIAMI TOWNSHIP PARK GUIDE

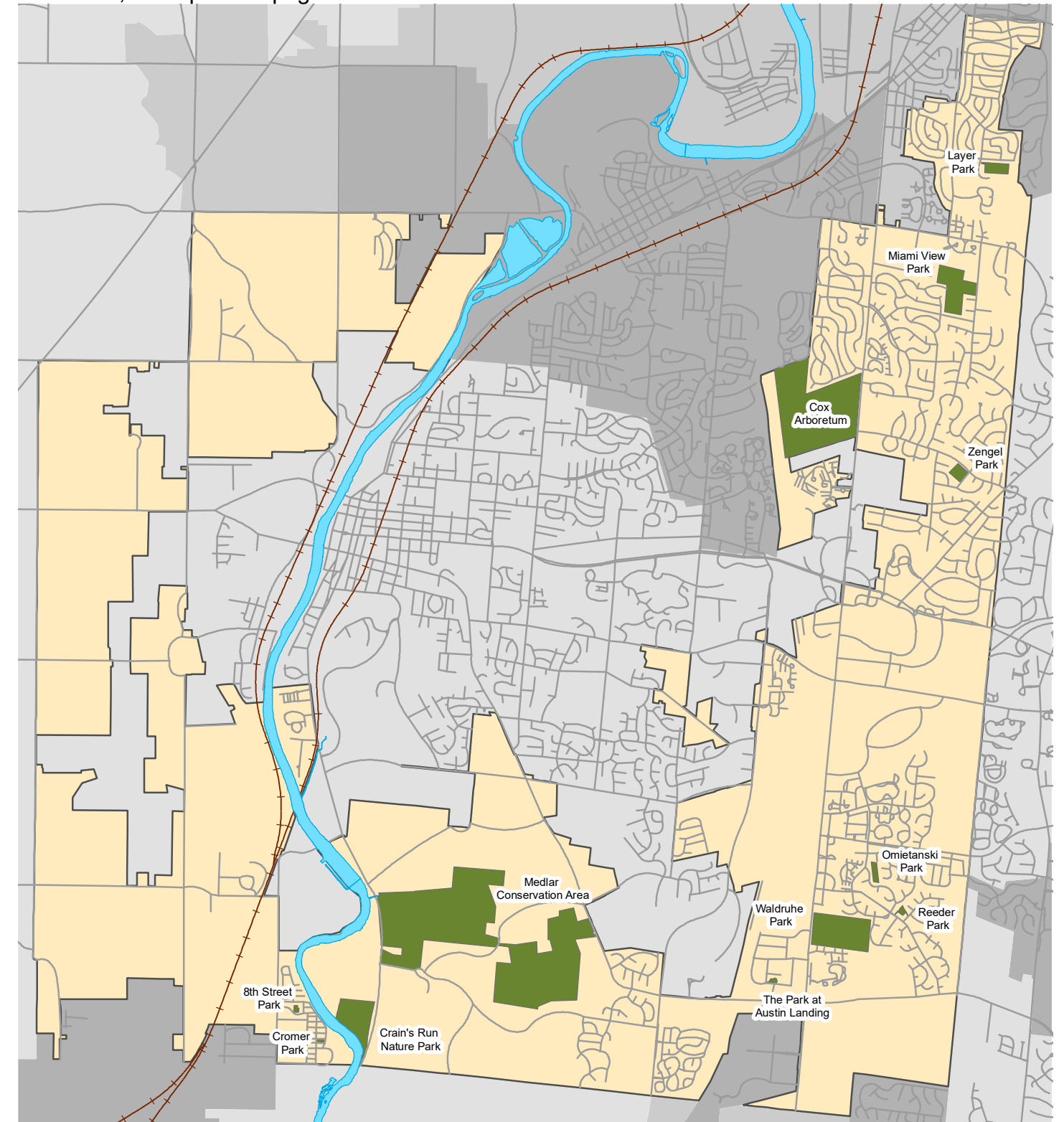


# IN THIS Guide

Introduction	Overview	1
Township Parks	Chautauqua Parks	2-3
	Crain's Run Nature Park	4-5
	Layer Park	6-7
	Miami View Park	8-9
	Omietanski Park	10-11
	Reeder Park	12-13
	Zengel Park	14-15
Parks in Township	The Park at Austin Landing	16-17
	Cox Arboretum & Gardens	18-19
	Medlar Conservation Area	20-21
	Waldruhe Park	22-23
	Parks Analysis	Accessibility
	Age of Residents Near Park	26

# INTRODUCTION Overview

Miami Township is home to twelve parks totaling 711.5 acres. The following section will detail a brief history of each park and catalog their amenities. Each map was created using the latest available aerial imagery. Conditions may have changed since the images were captured. In every map in this document, the top of the page delineates 'North'.



# TOWNSHIP PARKS Chautauqua

**Park Description**

8th Street Park (below) and Cromer Park (right) offer open space, playgrounds, and recreation to the people in the Chautauqua community. Both parks are fully integrated into the community, surrounded by neighboring homes, imparting a sense of security and coziness.



Park Details	
8th Street Park	
Address	6051 Eighth Avenue Miami Township, Ohio 45342
Acres	0.89
Amenities	Open Greenspace
	Playground
	Gazebo with Benches
Cromer Park	
Address	10200 Western Avenue Miami Township, Ohio 45342
Acres	0.63
Amenities	Basketball Court
	Open Greenspace
	Playground

**Park History**

The two parks located in the Chautauqua community have a unique history ties to the Miami Valley Chautauqua Association. Both of these parks were donated to Miami Township on January 15th, 1990 by the Miami Valley Chautauqua Association. The Association's property had only recently become part of the township in 1987, and these properties had previously been cared for by the Association. The park on Western Avenue had previously gone by the name of Cottage Park.

# TOWNSHIP PARKS Chautauqua

8th Street Park



Cromer Park



# TOWNSHIP PARKS

## Crain's Run

### Park Description

Located at the very southern end of the township this 34-acre park borders the Great Miami River. The Route 25/Great Miami Recreation Trail's southernmost section runs through the park as it follows the banks of the river. Two thirds of the park is heavily wooded with hiking trails winding throughout the woods, the remainder of the park is green space. One shelter house with picnic table seating for 40 people overlooks the park's four-acre pond. A second shelter was recently constructed and is now available for reservations. This shelter provides a scenic view of the river, seating for 70 people and running water.

In keeping with the nature theme of this park, there is no electricity or permanent restrooms available at Crains Run. Portable restrooms are located at the north and south ends of the Park. Two paved parking lots provide a total of 50 parking spaces. Adjoining the park proper, just across the road at the south end of the park, is a restored canal lock



that was built in 1829 as part of the Miami-Erie Canal system. Known as Sunfish Lock, it was restored by Miami Township in 1990.



### Park History

The City of Miamisburg and the Montgomery County Board of Commissioners transferred this property into the sole ownership of Montgomery County on October 11th, 1983. After almost 10 years of stewardship of the park, the Board of Commissioners of Montgomery County donated the land to Miami Township on September 1st, 1992.

Park Details	
Address	10741 Dayton-Cincinnati Pike Miami Township, Ohio 45342
Acres	34.8
Amenities	Fishing Pond
	Hiking Trail
	Parking Spaces (23 north lot, 32 south lot)
	Picnic Shelters (2 shelters, 40 people each)
	Playground
	Portable Toilets

# TOWNSHIP PARKS

## Crain's Run



# TOWNSHIP PARKS

## Layer

### Park Description

Formerly known as Bush-Dell Park, Layer Park was renamed in 1998 in honor of Berman E. Layer, a long time trustee and original member of the Miami Township Park Board. This park is located in the northernmost section of the township in Huber plat. Situated on 7 acres that is half shade trees and half open space, Layer Park features a shelter house with modern restrooms and picnic table seating for 56 people. A baseball diamond and 2 basketball half courts are provided for recreational needs. Playground equipment includes swing sets, a sand box, and a play structure. A paved parking lot at the entrance has spaces for 15 cars.



### Park History

In July 25, 1956 this property was donated by Robert E. Boswell M.D. to The Miami Valley Hunt and Polo Club, INC. Dr. Boswell specialized in head and neck surgery, and was a member of the Hunt and Polo Club. July 3rd 1972 property was,

donated by The Miami Valley Hunt and Polo Club, INC to The Board of County Commissioners of Montgomery County. In 1972 when this property was donated, there was no access via road to the property so a road would be built to reach the property.



Park Details	
Address	4990 Cordell Dr. Dayton, Ohio 45449
Acres	7
Amenities	Baseball Diamond
	Basketball Courts (2 half-courts)
	Grills (6)
	Parking (15 in entry lot)
	Picnic Shelter and Tables (1 shelter, 56 people)
	Playground
	Restrooms

# TOWNSHIP PARKS

## Layer

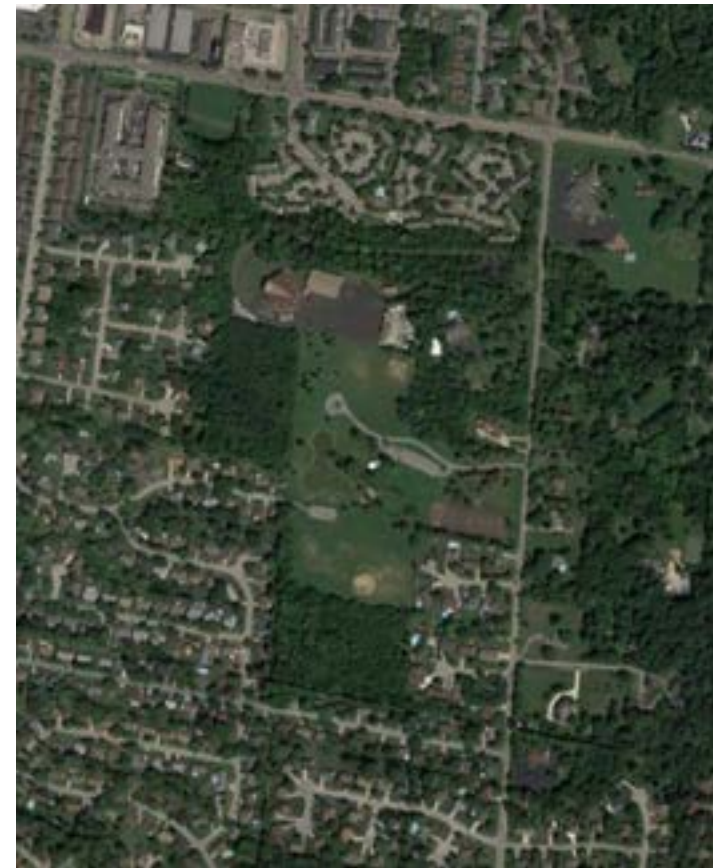


# TOWNSHIP PARKS

## Miami View

### Park Description

Located at the top of the hill on Munger Road, Miami-View Park has something for just about everyone. On it's 34 acres Miami-View has 6 tennis courts, 4 basketball half courts, 3 ball diamonds, a fishing pond, shelter house with modern restrooms, and playground equipment for the smaller children. In addition to being used by park visitors the tennis courts are also used as the home court for the West Carrollton High School tennis teams. The park can be accessed from two different entrances, the main entrance off of Munger Road has a parking lot for 49 cars, the second entrance off of Flowerstone Drive has a parking lot for 24 cars.



### Park History

On May 24, 1950 Loretta H. Howard gifted approximately 26 acres of land to Edna Huber. This land remained in the care of Edna and her husband George until they made the decision to donate it to the local Board of Education. On

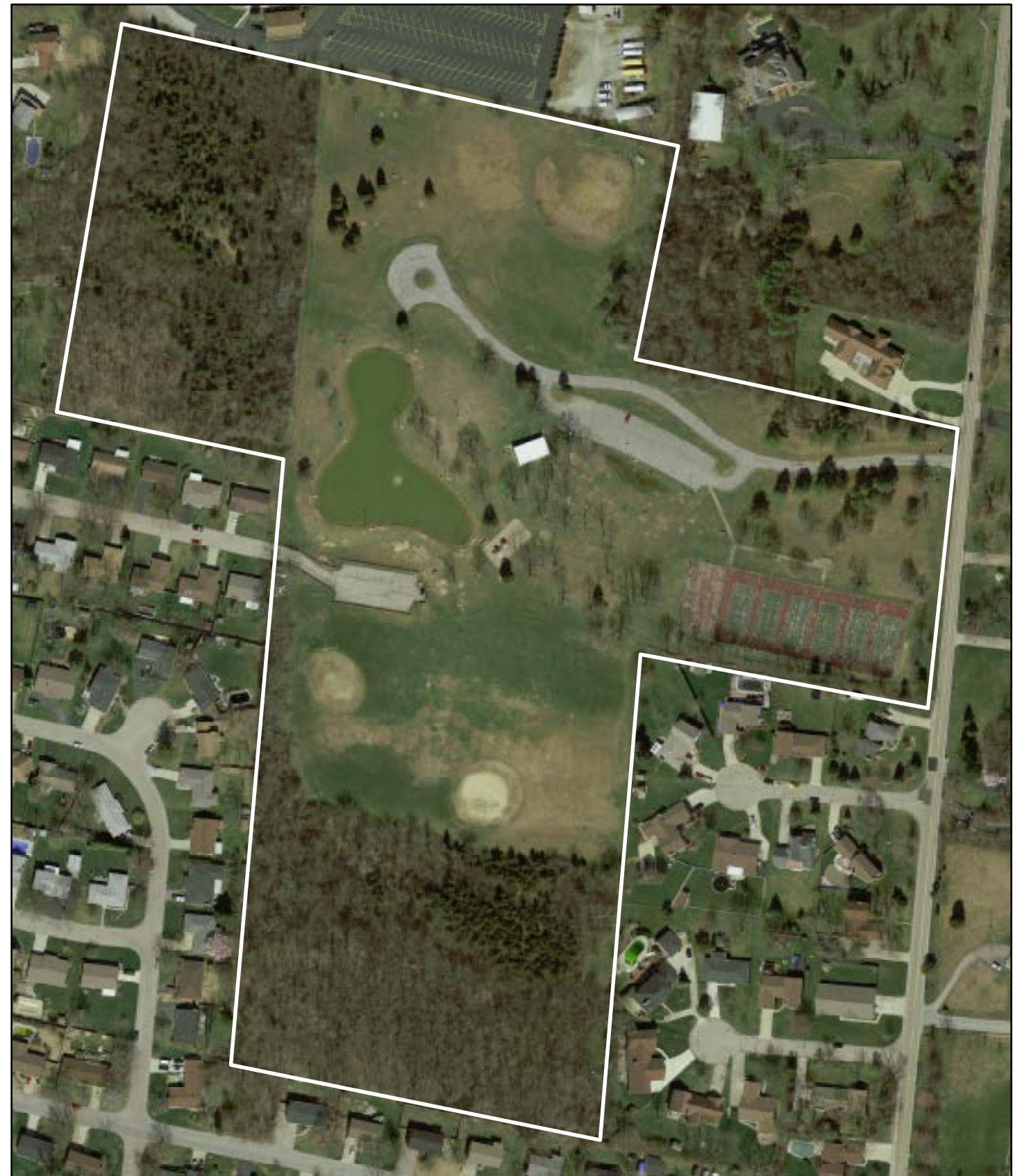
September 1st 1967 George and Edna Huber donated a 20 acre tract of land to the West Carrollton City School District. All of this land was donated to the Montgomery County Board of Commissioners by the West Carrollton City School district on June 20th 1972. After caring for the area for a number of years, the County Board of Commissioners left the land in the care of Miami Township with plans of a park. On September 1st 1992 the Montgomery County Board of Commissioners donated this entire property to Miami Township using a limited warrantee lease. The warrantee in this lease requires the Township to use this property only for a public park or for public green space.



Park Details	
Address	5911 Munger Rd. Dayton, Ohio 45449
Acres	33.84
Amenities	Baseball Diamonds (2)
	Fishing Pond
	Grills (3)
	Parking (49 east lot, 24 west lot)
	Picnic Shelter and Tables (1 shelter, 64 people)
	Playground
Restrooms	

# TOWNSHIP PARKS

## Miami View

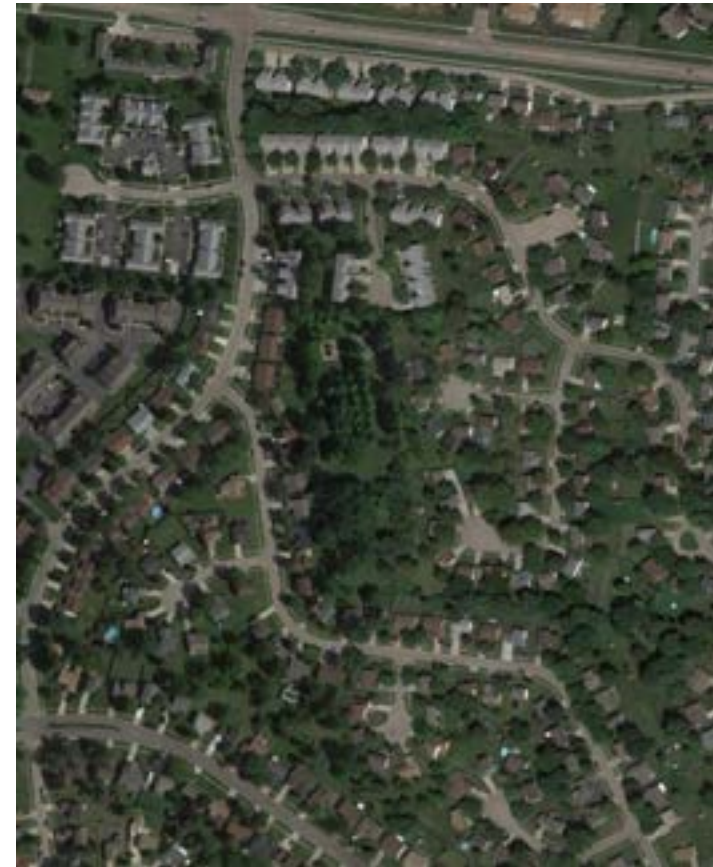


# TOWNSHIP PARKS

## Omietanski

### Park Description

Omietanski Park was dedicated on April 11, 2005 and named in honor of Shirley Omietanski, a long time trustee of Miami Township. An Ohio Natural Resources Grant of \$141,000 aided in the purchase of the property. This 3.29 acre park is located in the Villages of Miami subdivision. The park features a shelter house and play structure. A paved parking lot at the entrance has spaces for 6 automobiles.



### Park History

On October 13th of 1952, Paul and Ruth Light received a gift of around 70 acres of land from Robert and Betty Jane Christman. This piece of family land then stayed with the Lights for almost 50 years. When Ruth L. Light died on April 27th of 1993, the property, now 3.3 acres was transferred to her husband Paul J. Light. Paul Light died shortly after his wife, on October 13th of 1998. He left this land to his daughter Melody Light-Brewer.

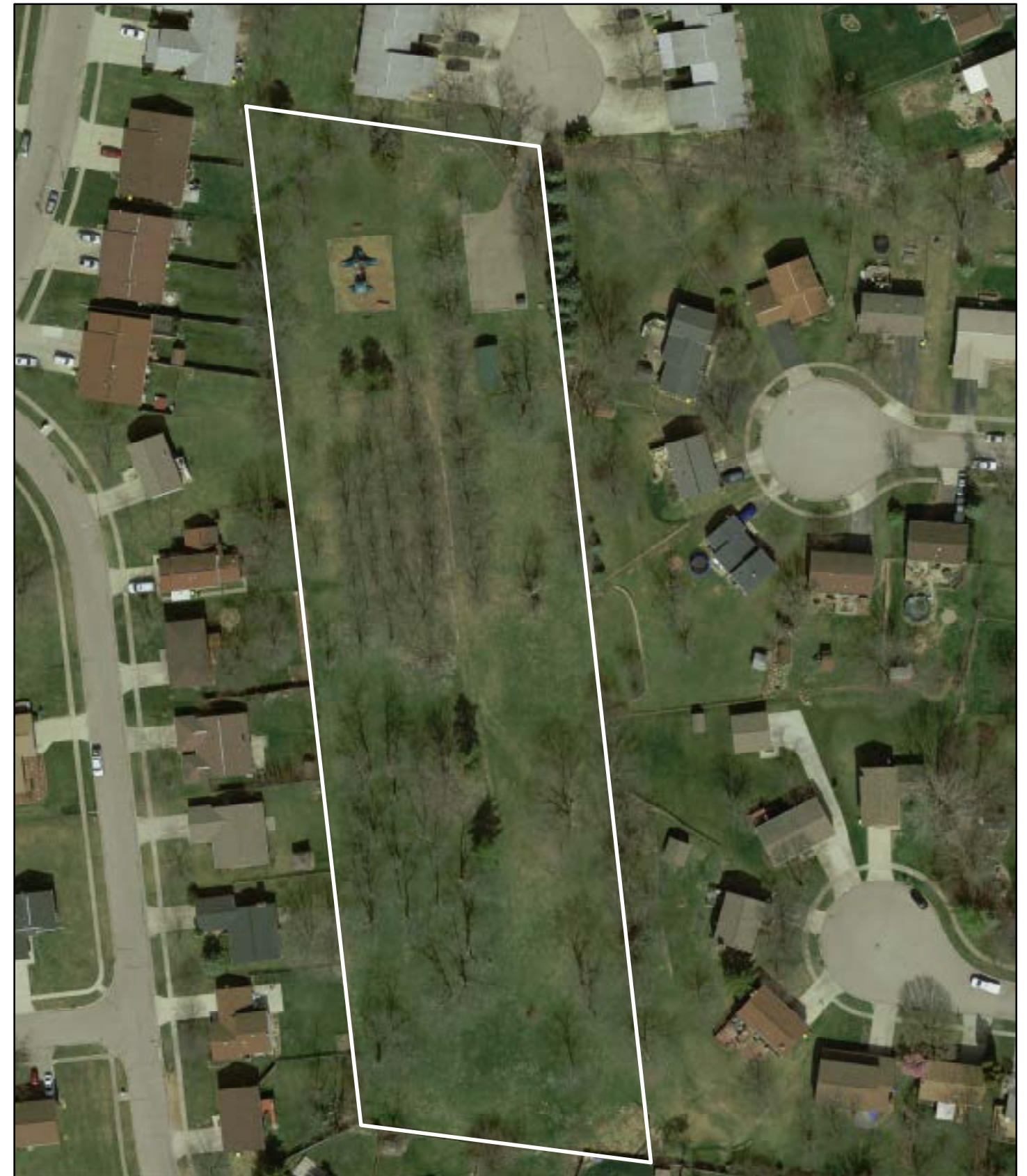
In 1999 Melody then moved on to sell the land to Ruth Ann Bacher, who paid \$272 for the property. David Orleck obtained the property from Ruth Bacher in 2002, and on December 8th of 2003 sold the property to Miami Township.



Park Details	
Address	9797 Nettleton Park Miami Township, Ohio 45342
Acres	3.2
Amenities	Grills (2) Parking (5 at entry lot) Picnic Shelter (1 shelter, 24 people) Playground

# TOWNSHIP PARKS

## Omietanski



# TOWNSHIP PARKS

## Reeder

**Park Description**

Located in the Villages of Miami subdivision, Reeder Park features an open greenspace and a playground area. Being surrounded by Villages of Miami homes, Reeder park has no formal parking area. The park's formal access points are grassy paths fronting on Lincolnshire Road and Miami Village Drive between adjacent properties.

Park Details	
Address	9979 Lincolnshire Rd Miami Township, Ohio 45342
Acres	1.3
Amenities	Open Greenspace Playground



**Park History**

The farm owned by Loran and Iva Smith had been rented out for share cropping from the early 1950s until April 22, 1972 when the property was sold to Empire Unlimited. The property was then transferred on April 12th, 1972 to Wimpey Developments, a housing construction company. The portion of this land which eventually became Reeder Park was set aside in the lot planning as a location for a park. Wimpey-Empire-Dayton then

# TOWNSHIP PARKS

## Reeder



# TOWNSHIP PARKS

## Zengel

**Park Description**

This five-acre lot at the northwest corner of Vienna parkway and Innsbruck Dr. was donated to Miami Township by the Zengel family for use as a park. About three fourths of the lot is open green space with the remainder of the lot in mature shade trees. There are several picnic tables located throughout the park and a play structure for small children. This allows the area to be used for passive and casual recreational uses while preserving the open green space value of the area.



piece of land was used for new home construction. This small piece of land was purchased for \$500 on July 25th, 1989 by Karl Zengel and his wife Constance Zengel, who resided in the farmhouse and barn on the property.

Upon the death of Karl Zengel, the land on which the Zengels resided was returned to Zengel Construction Company.

On March 31st of 2000 the Zengel Construction Company donated the 5.3 acres of land to Miami Township, with conditions for its usage as a park. These conditions state that no electric lights or fences may be installed on the property, and until 2010 no regularly scheduled athletic activities were to be permitted on the property.



Park Details	
Address	2176 Vienna Parkway Miami Township, Ohio 45342
Acres	5.2
Amenities	Open Greenspace Playground Picnic Tables

**Park History**

On March 4th, 1948, Elizabeth Zengel purchased approximately 345 acres of land from Evelyn Dickey. This land was a farm, including a farmhouse from the 1800s and a barn of similar age.

On September 16th of 1952 Elizabeth gifted this land to her husband, Adam Zengal. Adam transferred the property to Zengel Construction company, and in the next 30 years all but a small

# TOWNSHIP PARKS

## Zengel



# PARKS IN TOWNSHIP

## Austin Landing

**Park Description**

The Park at Austin Landing is within Miami Township and is a Miami Township park, but the grounds are maintained by Austin Landing.

The Park at Austin Landing is intended to be a focal point for the Austin Landing Development. The Park at Austin Landing was envisioned as a central gathering place for the office, retail, and restaurant uses that surround the park, and as a venue for special events to be hosted throughout the year.

The Park features a Bicycle Hub, an enclosed building containing storage for bicycles, lockers, and restrooms. The Park also has walking trails lined with pedestrian scale lighting, benches, and trash receptacles.

The Park has a stage that allows entertainment acts to perform at special park events.

A water feature on the east side of the park is designed to mimic a natural stream with waterfalls and riffles. A bridge spans the water feature to allow pedestrian traffic access.

Park Details	
Address	10400 Innovation Way Miami Township, Ohio 45342
Acres	0.96
Amenities	Open Greenspace
	Lit Walking Trails and Benches
	Stage
	Bicycle Hub
	Water Feature and Bridge

# PARKS IN TOWNSHIP

## Austin Landing



# PARKS IN TOWNSHIP

## Cox Arboretum

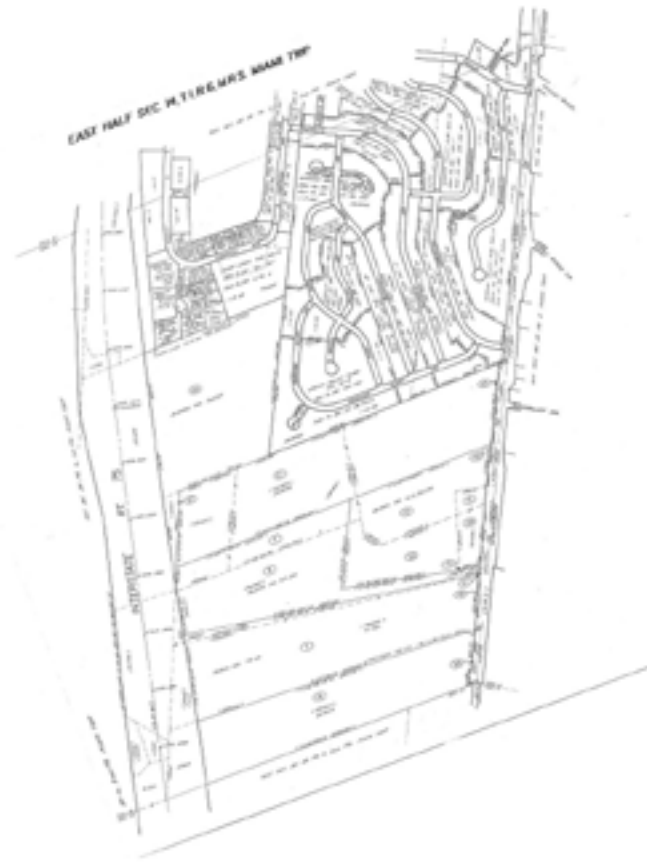
### Park Description

Cox Arboretum is located within Miami Township, but is maintained by Five Rivers Metroparks. This beautiful 189-acre facility is a special place for visitors to escape among trees, shrubs, specialty gardens, mature forests, and prairies. The arboretum hosts year-round educational programs that teach children and adults about sustainable horticulture, plant science, and conservation. Cox Arboretum Metro Park is also home to a native-Ohio Butterfly House.



### Park History

This park was founded on December 2, 1962, The James M. Cox, Jr. Arboretum Foundation was formed when the Cox Family donated their property to create an arboretum. For many years, the property was cared for by dedicated volunteers, who also governed the Foundation. In 1972, they gifted the land to Five Rivers MetroParks and began a unique and successful public (MetroParks) / private (James M. Cox, Jr. Arboretum Foundation) partnership.



Park Details	
Address	6733 Springboro Pike Dayton, Ohio 45449
Acres	189
Amenities	Gardening
	Hiking Trails
	Interpretative Exhibits
	Rentable Indoor Facility
	Restrooms
	Teaching Center
	Wi-Fi
	Year-round Horticulture Classes

# PARKS IN TOWNSHIP

## Cox Arboretum



# PARKS IN TOWNSHIP

## Medlar

### Park Description

Medlar Conservation Area is located within Miami Township, but is maintained by Five Rivers Metroparks. Medlar Conservation Area is made up of mature woods, fields, shrub-scrub habitat, a pond and several created wetlands. The park is bisected by the Great-Little paved trail, a bikeway that connects the Great Miami River Trail to Austin Pike and Social Row Road.

Hecker Pond is a catch and release fishing pond, surrounded by diverse habitats and terrain that are home to wild turkey, fox, deer, and many bird species.

Park Details	
Address	4558 Medlar Road Miami Township, Ohio 45342
Acres	401
Amenities	Fishing Pond
	Great-Little Bikeway
	Parking (28 at entry lot)

### Park History

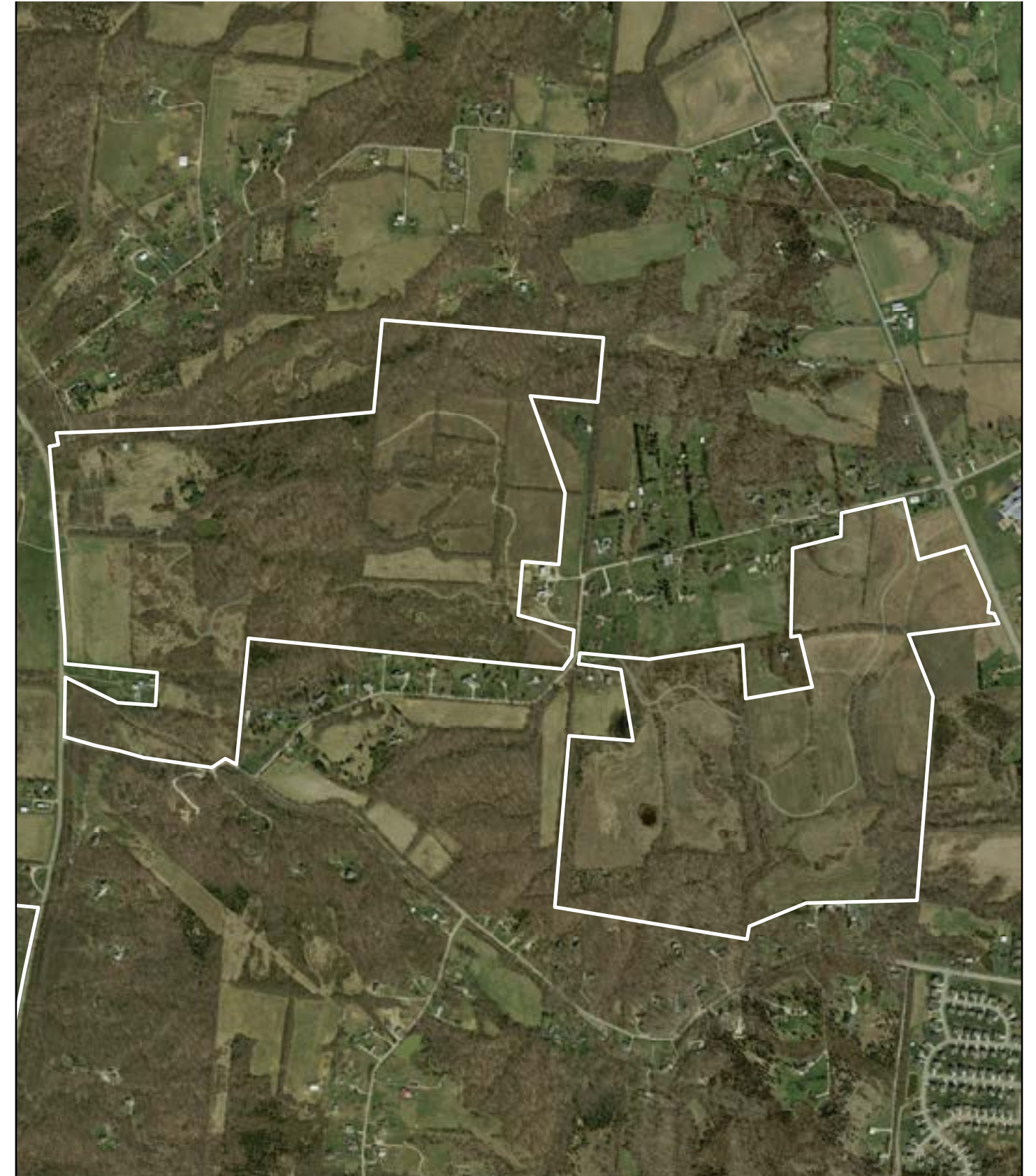
The land that would become the Medlar Conservation Area was purchased in 1972 by Five Rivers Metroparks, and gained momentum with a conservation easement donation from Mrs. Gwen Rice for 105 acres of farm land. The remaining acreage was acquired between 2008-2012 using the Clean Ohio Green Space funds.

20,000 trees were planted in 2012 on former farm land with the intention of growth into a future forest. The trees were paid for by the Clean Ohio Fund as part of the Shepard's Run Reforestation Project.

The ultimate goal for the Great-Little bikeway is to connect the Great Miami River Trail (west) to the Little Miami Scenic Trail (east).

# PARKS IN TOWNSHIP

## Medlar



# PARKS IN TOWNSHIP

## Waldruhe

### Park Description

The original owner of this 53-acre property, Adam Schantz, gave the property the German name "Waldruhe". Translated into English, it means "Forest Rest." The name is still appropriate today as the heavily wooded lot offers a peaceful place for visitors to relax and enjoy centuries old White Oak trees, a variety of woodland wildflowers, and several species of birds that nest and forage throughout the park. Two open-air shelter houses made of oak beams and cedar shingle roofs blend in with the natural setting, and provide picnic table seating for 80 people at the larger one and seating for 72 at the smaller one. Water and electricity are available at both shelter houses. Two swing sets, one slide and a play structure are provided for children. At the present time restroom facilities are limited to portable restrooms. Two paved parking lots provide a total of 36 parking spaces.



### Park History

In the late 1970s, the City of Dayton had plans to sell a number of trees for lumber in the park. After much public outcry and a lawsuit brought against the city in 1981 by the Schantz family, the decision was handed down that the trees cannot be cut down and sold for lumber, as keeping the park as a wooded area was the intention of Adam Schantz in his deed.

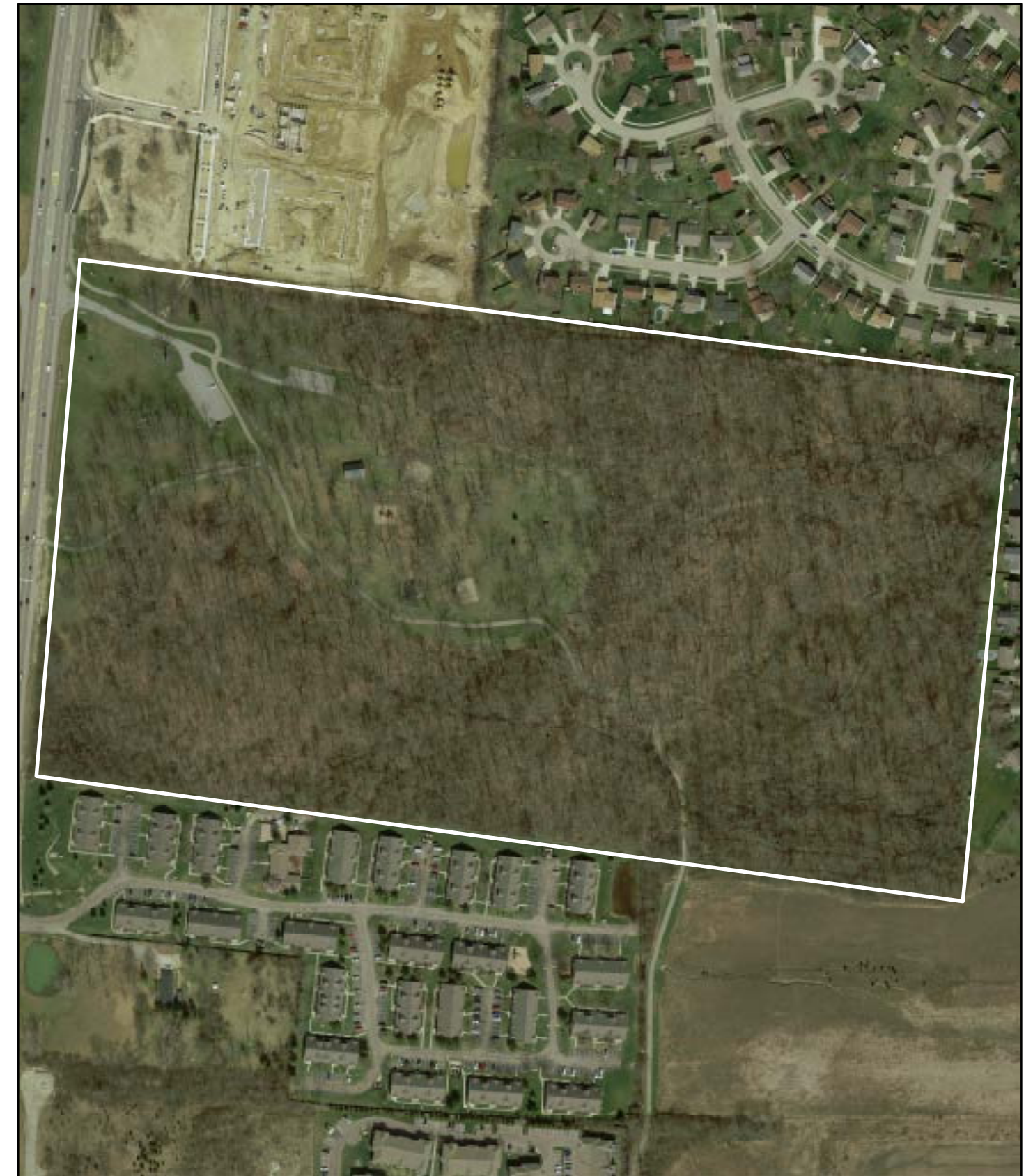
Waldruhe Park is property of the Montgomery County Board of Commissioners, so Miami Township rents the property in periods of 60 years. The date of the original lease is July 1st, 1982 and the charge to rent the property is \$1. The township's lease is due to be renewed on July 1st of 2042. This lease states that Miami Township will maintain and operate the leased park. A trust exists to maintain the two parks Adam Schantz left to the City, and 79% of the profit from this trust is used to maintain Waldruhe Park. The other 21% of the profit from the trust is used to maintain Riverview Park.



Park Details	
Address	10000 Springboro Pike Miami Township, Ohio 45342
Acres	53
Amenities	Grills (2) Walking Trails (Connects to Great Miami River Bike Trail) North Picnic Shelter and Tables (1 shelter, 80 people) Parking (32 at entry lot) Playground Portable Toilets South Picnic Shelter and Tables (1 shelter, 72 people)

# PARKS IN TOWNSHIP

## Waldruhe



# PARKS ANALYSIS

## Accessibility

### Rationale

The most common metric for measuring park accessibility is walking distance. The inherent purpose of a park is to provide opportunity for residents to engage their surroundings and the outdoors. As such, the journey to and from the park should be a part of the experience.

To ensure that parks are accessible without requiring a vehicle, many cities across the United States have set goals for park accessibility to its residents by distance related to travel distance while walking. The *Center for City Park Excellence* has identified a half-mile as a common standard for a reasonable distance to walk to a park, with some cities setting goals above and below that metric.

The accessibility map (page 21) identifies buffer zones containing land within 0.25, 0.5, and 0.75 miles of a park as seen in the graphic below. As an additional point of reference, the *National Survey of Bicyclist and Pedestrian Attitudes and Behavior* assumes that 5 minutes of walking roughly equates to 0.25 mile, and proportionally continues up to a mile.



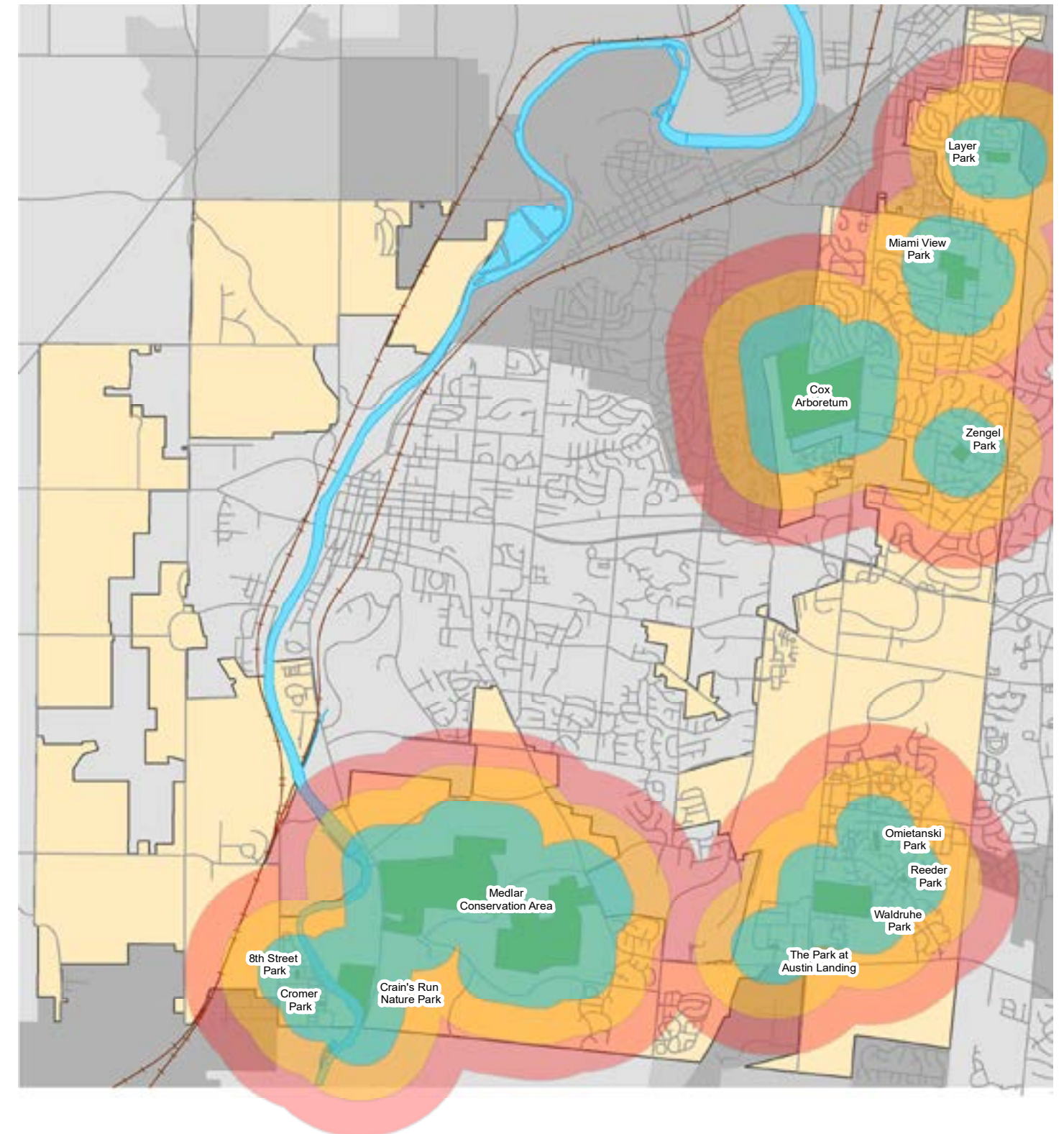
### Calculation

To determine the Percent of Township Covered by each metric, the total area of land (in the township only) that was within each buffer zone was calculated. The area within each buffer (not including the area of the parks) was divided by the total area of the Township.

Accessibility Details		
Walking Distance	Walking Time	Percent of Township Covered
0.25 mi	5 min	13.9%
0.5 mi	10 min	29.1%
0.75 mi	15 min	40.5%

# PARKS ANALYSIS

## Accessibility



# PARKS ANALYSIS

## Age Near Park

**Rationale**

Below is an chart listing the median age immediately surrounding each park. Staff utilized the 2019 American Community Survey data associated with the Census Block Groups within our community. The data is not as exact as the data obtained from the Dicennial Census, but supplies a basic understanding of each park’s immediate demographic.

Median Age Near Park	
Park Name	Median Age
8th Avenue Park	47.6
The Park at Austin Landing	36.7
Cox Arboretum	45.6
Cromer Park	47.6
Layer Park	42.3
Medlar Conservation Area	36.0
Miami View Park	45.8
Omietanski Park	36.7
Reeder Park	36.7
Waldruhe Park	36.7
Zengal Park	49.0